



# EBLING BACK BLADE

PARTS & SERVICE

INFORMATION GUIDE





## **BACK BLADE Parts Identification Guide**

Index Page	1
Truck, HW Edges, 08-13 & 15-Current	2
Truck, HW Edges, 102" MB 14 & 16'	3
Truck, HW Edges, 102" MB x 17'	4
Truck, HW & FW Edges, 2014 Only	5
Truck, FW Edges, 08-13 & 15-Current	6
sidekick, Edges, All	6
Tractor, Edges 24"x72", 10' & 14'	7
Tractor, Edges 24"x96", 12' & 16'	8
Tractor, Edges 30"x102", 16'	9
Common Hydraulic Replacement Parts	10-12
Power Units	13
Hydraulic Cylinders	14
Hydraulic Cylinder Adapters	15
Hydraulic Hoses	16-17
Common Weldment Replacement Parts	18-21
Common Electrical Replacement Parts	22-26
Accessories	27-29
Common sidekick Parts	30-32
<b><u>Support Section</u></b>	33
Shear Bolt Warning	34-35
Mount & Arm Guide	36-37



### 08-13 & 15-Current Truck Hydraulic Wing Cutting Edges - Left Side

**Moldboard Edge**

Steel AA05-0004 (OAL 88 1/2")  
Poly AA05-0011 (OAL 88 1/2")

**Moldboard Corner**

**Block Left**  
All AA05-0028

**Wing Corner**

**Edge Left**  
All AA05-0032

**Wing Edge Left**

12 ft AA05-0015 (OAL 22 1/8")  
14 ft AA05-0017 (OAL 34 1/8")  
16 ft AA05-0019 (OAL 46 1/8")



**MB Edge**

**Bolt Kit**  
Steel AA03-0040  
Poly AA03-0076

**MB Corner Block**

**Bolt Kit**  
All AA03-0006

**Wing Corner Edge**

**Bolt Kit**  
All AA03-0052

**Wing Edge Bolt Kit**

12 ft AA03-0044  
14 ft AA03-0047  
16 ft AA03-0045

### 08-13 & 15-Current Truck Hydraulic Wing Cutting Edges - Right Side

**Wing Edge Right**

12 ft AA05-0045 (OAL 22 1/8")  
14 ft AA05-0047 (OAL 34 1/8")  
16 ft AA05-0049 (OAL 46 1/8")

**Wing Corner**

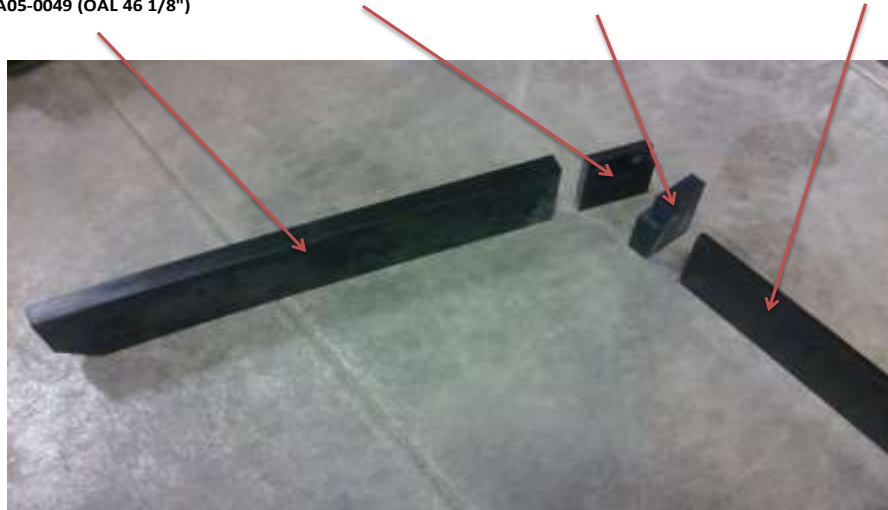
**Edge Right**  
All AA05-0033

**Moldboard Corner**

**Block Right**  
All AA05-0029

**Moldboard Edge**

Steel AA05-0004 (OAL 88 1/2")  
Poly AA05-0011 (OAL 88 1/2")



**Wing Edge Bolt Kit**

12 ft AA03-0044  
14 ft AA03-0047  
16 ft AA03-0045

**Wing Corner Edge**

**Bolt Kit**  
All AA03-0052

**MB Corner Block**

**Bolt Kit**  
All AA03-0006

**MB Edge**

**Bolt Kit**  
Steel AA03-0040  
Poly AA03-0076



**102" MOLDBOARD ONLY** - Truck Hydraulic Wing Cutting Edges - Left Side  
2008 to 2016

Moldboard Edge  
Steel AA05-0003 (OAL 100 1/2")  
Poly AA05-0010 (OAL 100 1/2")

Moldboard Corner Block  
Left AA05-0028

Wing Corner Edge  
Left AA05-0032

Wing Edge Left  
14 ft AA05-0013 (OAL 28 1/8")  
16 ft AA05-0014 (OAL 40 1/8")



MB Edge  
Bolt Kit  
Steel AA03-0041  
Poly AA03-

MB Corner Block  
Bolt Kit  
All AA03-0006

Wing Corner Edge  
Bolt Kit  
All AA03-0052

Wing Edge Bolt Kit  
14 ft AA03-0047  
16 ft AA03-0045

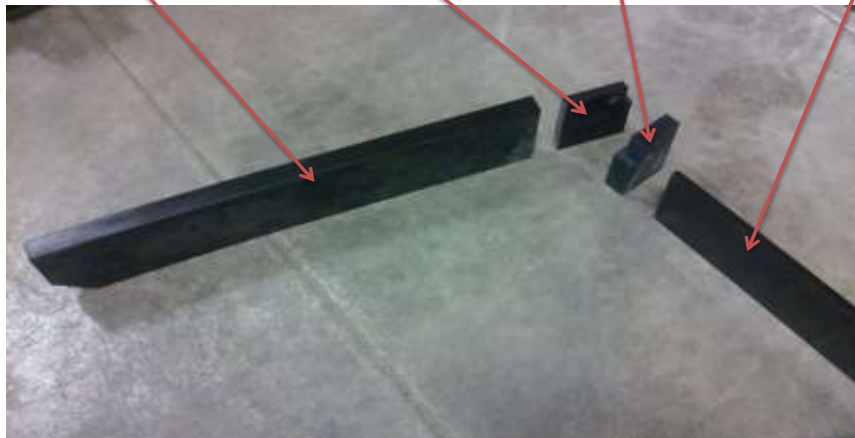
**102" MOLDBOARD ONLY** - Truck Hydraulic Wing Cutting Edges - Right Side  
2008 to 2016

Wing Edge Right  
14 ft AA05-0043 (OAL 28 1/8")  
16 ft AA05-0044 (OAL 40 1/8")

Wing Corner  
Edge Right  
Right AA05-0029

Moldboard Corner  
Block Right  
Right AA05-0033

Moldboard Edge  
Steel AA05-0003 (OAL 100 1/2")  
Poly AA05-0010 (OAL 100 1/2")



Wing Edge Bolt Kit  
14 ft AA03-0047  
16 ft AA03-0045

Wing Corner Edge  
Bolt Kit  
All AA03-0052

MB Corner Block  
Bolt Kit  
All AA03-0006

MB Edge  
Bolt Kit  
Steel AA03-0041  
Poly AA03-



**102" MOLDBOARD x 17' ONLY** - Truck Hydraulic Wing Cutting Edges - Left Side  
2020 - Current

Moldboard Edge  
Steel AA05-0003 (OAL 100 1/2")  
Poly AA05-0010 (OAL 100 1/2")

Moldboard Corner Block  
Left AA05-0028

Wing Corner Edge  
Left AA05-0032

Wing Edge Left  
16 ft AA05-0019 (OAL 46 1/8")



MB Edge  
Bolt Kit  
Steel AA03-0041  
Poly AA03-

MB Corner Block  
Bolt Kit  
All AA03-0006

Wing Corner Edge  
Bolt Kit  
All AA03-0052

Wing Edge Bolt Kit  
16 ft AA03-0045

**102" MOLDBOARD x 17' ONLY** - Truck Hydraulic Wing Cutting Edges - Right Side  
2020 - Current

Wing Edge Right  
16 ft AA05-0049 (OAL 46 1/8")

Wing Corner  
Edge Right  
Right AA05-0029

Moldboard Corner  
Block Right  
Right AA05-0033

Moldboard Edge  
Steel AA05-0003 (OAL 100 1/2")  
Poly AA05-0010 (OAL 100 1/2")



Wing Edge Bolt Kit  
16 ft AA03-0045

Wing Corner Edge  
Bolt Kit  
All AA03-0052

MB Corner Block  
Bolt Kit  
All AA03-0006

MB Edge  
Bolt Kit  
Steel AA03-0041  
Poly AA03-



## 2014 ONLY Truck Hydraulic Wing Cutting Edges - Both Sides

**Moldboard Edge**

All AA05-0005 (OAL 79 3/4")  
Poly 90" AA05-0012  
Poly 96" AA05-SPL

**MB Sleeve Edge**

All AA05-0006 (OAL 25 5/8")

**Moldboard Corner Block**

Left AA05-0026  
Right AA05-0027

**Wing Corner Edge**

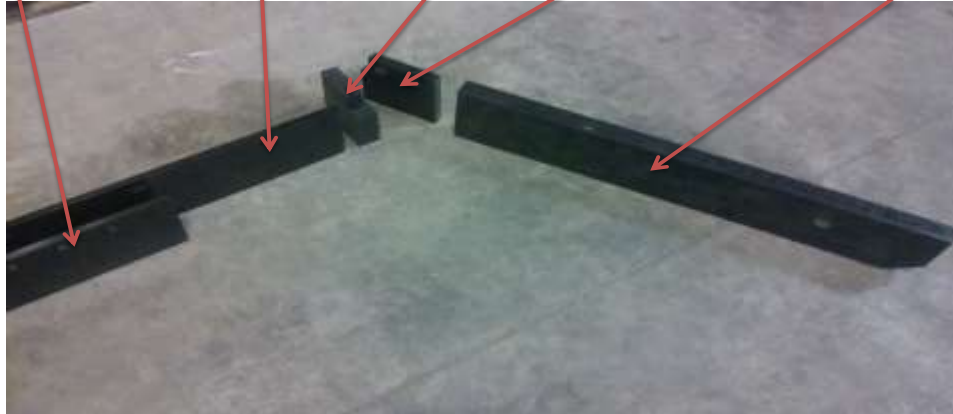
Left AA05-0034  
Right AA05-0035

**Wing Edge Left**

12 ft AA05-0016 (OAL 21 1/2")  
14 ft AA05-0018 (OAL 33 1/2")  
16 ft AA05-0020 (OAL 45 1/2")

**Wing Edge Right**

12 ft AA05-0046 (OAL 21 1/2")  
14 ft AA05-0048 (OAL 33 1/2")  
16 ft AA05-0050 (OAL 45 1/2")



**MB Center Edge**

**Bolt Kit**  
AA03-0058

**MB Sleeve Edge**

**Bolt Kit**  
AA03-0059

**MB Corner Block**

**Bolt Kit**  
All AA03-0006

**Wing Corner Edge**

**Bolt Kit**  
All AA03-0052

**Wing Edge Bolt Kit**

12 ft AA03-0044  
14 ft AA03-0047  
16 ft AA03-0045

## 2014 ONLY Truck Fixed Wing Cutting Edges

**Right Wing Edge**

All AA05-0053

**Sleeve Edge**

AA05-0007  
(OAL 18 1/2")

**Moldboard Edge**

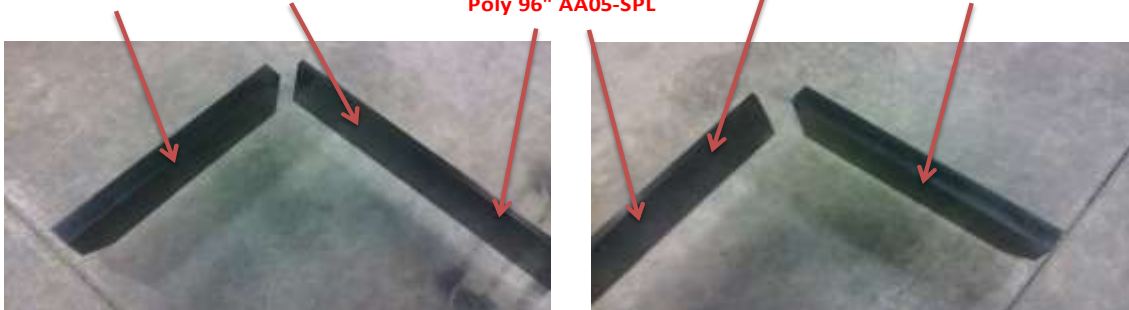
AA05-0005 (OAL 79 3/4")  
Poly 90" AA05-0012  
Poly 96" AA05-SPL

**Sleeve Edge**

AA05-0007  
(OAL 18 1/2")

**Left Wing Edge**

All AA05-0023



**Wing Edge**

**Bolt Kit**  
AA03-0046

**Moldboard Edge**

**Bolt Kit**  
AA03-0060

**MB Sleeve Edge**

**Bolt Kit**  
AA03-0061



### 08-13 & 15-Current Truck Fixed Wing Cutting Edges 90" & 96" Models

Right Wing Edge

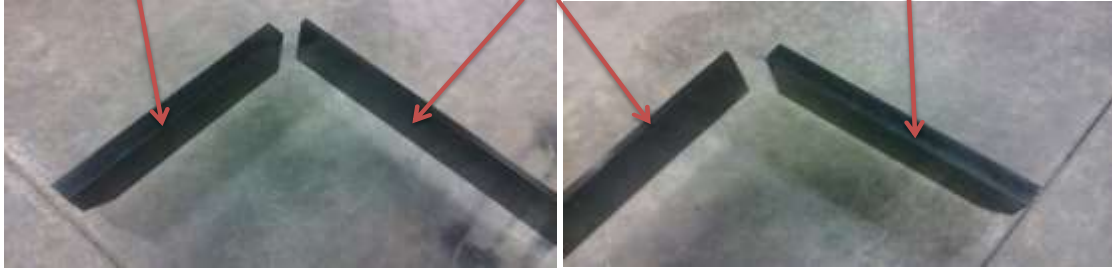
All AA05-0055 (OAL 19 1/4")

Moldboard Edge

90" Steel AA05-0004 (OAL 88 1/2")  
96" Steel AA05-0058 (OAL 94 1/2")  
90" Poly AA05-0011 (OAL 86 1/2")  
96" Poly AA05-0064 (OAL 92 1/2")

Left Wing Edge

All AA05-0054 (OAL 19 1/4")



Wing Edge

Bolt Kit

AA03-0046

Moldboard Edge

Bolt Kit

90" Steel AA03-0040  
96" Steel AA03-0041  
90" Poly AA03-0062  
96" Poly AA03-0063

### 17-Current sidekick Cutting Edges

Wing Edge

Right

AA05-0057 (OAL 14")

MB Sleeve

AA05-0060 (OAL 14 1/4")

Moldboard

AA05-0059 (OAL 73 3/4")

MB Sleeve

AA05-0060 (OAL 14 1/4")

Wing Edge

Left

AA05-0056 (OAL 14")



Wing Edge

Bolt Kit Ea

AA03-0056

Moldboard Edge

& Sleeve Bolt Kit

AA03-0055



**Tractor Hydraulic Wing Cutting Edges 24"x72" Moldboard 10 ft & 14 ft Models Left**

Moldboard Edge

Steel AA05-0038 (OAL 72")  
Poly AA05-0063 (OAL 72")

Moldboard Corner

Block Left  
All AA05-0024

Wing Corner

Edge Left  
All AA05-0030

Wing Edge Left

10 ft AA05-0041 (OAL 14 3/4")  
14 ft AA05-0021 (OAL 38 3/4")



MB Edge  
Bolt Kit

Steel AA03-0042  
Poly AA03-0064

MB Corner Block  
Bolt Kit

All AA03-0006

Wing Corner Edge  
Bolt Kit

All AA03-0052

Wing Edge  
Bolt Kit

10 ft AA03-0044  
14 ft AA03-0045

**Tractor Hydraulic Wing Cutting Edges 24"x72" Moldboard 10 ft & 14 Ft Models Right**

Wing Edge Right

10 ft AA05-0042 (OAL 14 1/4")  
14 ft AA05-0051 (OAL 38 3/4")

Wing Corner

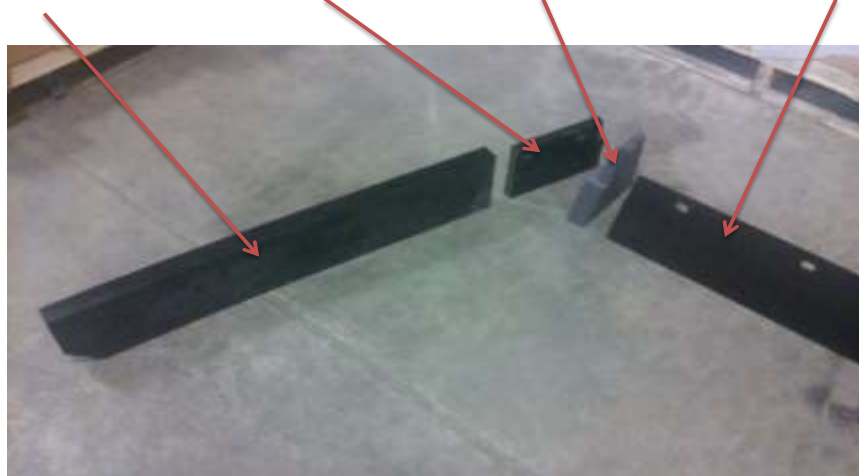
Edge Right  
All AA05-0031

Moldboard Corner

Block Right  
All AA05-0025

Moldboard Edge

Steel AA05-0038 (OAL 72")  
Poly AA05-0063 (OAL 72")



Wing Edge Bolt Kit

10 ft AA03-0044  
14 ft AA03-0045

Wing Corner Edge

Bolt Kit  
All AA03-0052

MB Corner Block

Bolt Kit  
All AA03-0006

MB Edge

Bolt Kit  
Steel AA03-0042  
Poly AA03-0064



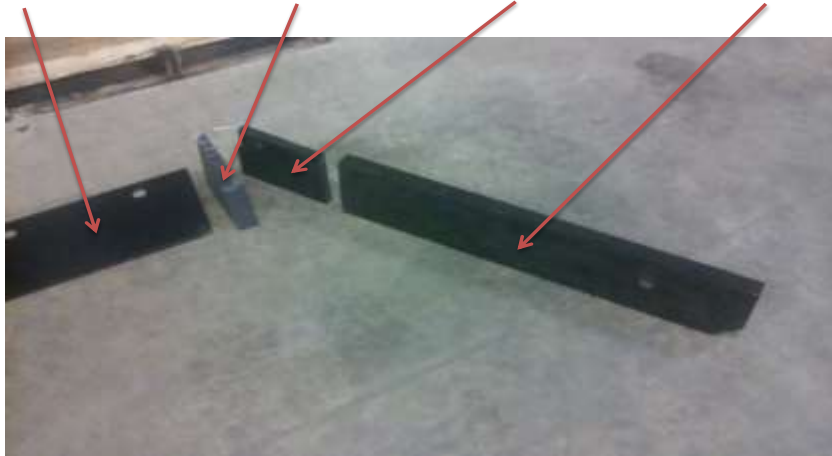
**Tractor Hydraulic Wing Cutting Edges 24"x96" Moldboard 12 ft & 16 ft Models Left**

Moldboard Edge  
Steel AA05-0001 (OAL 96")  
Poly A05-0008 (OAL 96")

Moldboard Corner  
Block Left  
All AA05-0024

Wing Corner  
Edge Left  
All AA05-0030

Wing Edge Left  
12 ft AA05-0041 (OAL 14 3/4")  
16 ft AA05-0021 (OAL 38 3/4")



MB Edge  
Bolt Kit  
Steel AA03-0043  
Poly AA03-0065

MB Corner Block  
Bolt Kit  
All AA03-0006

Wing Corner Edge  
Bolt Kit  
All AA03-0052

Wing Edge  
Bolt Kit  
12 ft AA03-0044  
16 ft AA03-0045

**Tractor Hydraulic Wing Cutting Edges 24"x96" Moldboard 12 ft & 16 Ft Models Right**

Wing Edge Right  
12 ft AA05-0042 (OAL 14 3/4")  
16 ft AA05-0051 (OAL 38 3/4")

Wing Corner  
Edge Right  
All AA05-0031

Moldboard Corner  
Block Right  
All AA05-0025

Moldboard Edge  
Steel AA05-0001 (OAL 96")  
Poly AA05-0008 (OAL 96")



Wing Edge Bolt Kit  
12 ft AA03-0044  
16 ft AA03-0045

Wing Corner Edge  
Bolt Kit  
All AA03-0052

MB Corner Block  
Bolt Kit  
All AA03-0006

MB Edge  
Bolt Kit  
Steel AA03-0043  
Poly AA03-0065



### Tractor Hydraulic Wing Cutting Edges 30"x102" Moldboard 16ft Left

Moldboard Edge

Steel AA05-0002 (OAL 102")  
Poly AA05-0009 (OAL 102")

Moldboard Corner

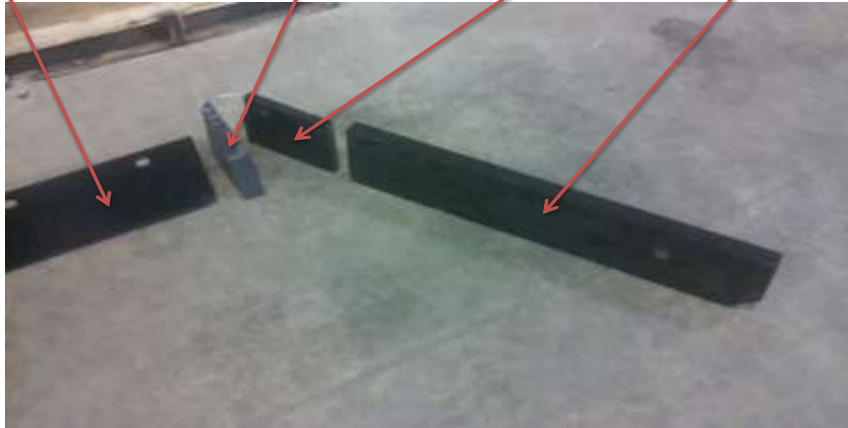
Block Left  
All AA05-0024

Wing Corner

Edge Left  
All AA05-0030

Wing Edge Left

AA05-0022 (OAL 35 5/8")



MB Edge

Bolt Kit  
Steel AA03-0043  
Poly AA03-0065

MB Corner Block

Bolt Kit  
All AA03-0006

Wing Corner Edge

Bolt Kit  
All AA03-0052

Wing Edge

Bolt Kit  
AA03-0045

### Tractor Hydraulic Wing Cutting Edges 30"x102" Moldboard 16 Ft Right

Wing Edge Right

AA05-0052 (OAL 35 5/8")

Wing Corner

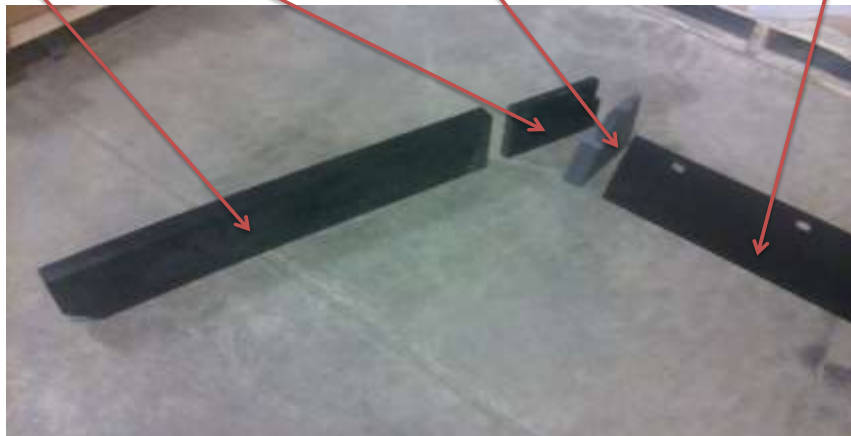
Edge Right  
All AA05-0031

Moldboard Corner

Block Right  
All AA05-0025

Moldboard Edge

Steel AA05-0002 (OAL102")  
Poly AA05-0009 (OAL 102")



Wing Edge Bolt Kit

All AA03-0045

Wing Corner Edge

Bolt Kit  
All AA03-0052

MB Corner Block

Bolt Kit  
All AA03-0006

MB Edge

Bolt Kit  
Steel AA03-0043  
Poly AA03-0065



## Common Hydraulic Replacement Parts



**STD HW Counterbalance  
AA02-0084**



**STD HW & FW Lift/Lower  
AA02-0013**



**STD HW Wing Valve  
AA02-0012**



**FW Lower/Lift Valve  
AA02-0089**



**Vent Cap  
AA02-0021**



**HD Coil  
AA01-0001**



**Hydraulic Pump  
AA02-0080**



**Standard Motor  
AA01-0007**



**HD Motor  
AA01-0039**



### Common Hydraulic Replacement Parts



**Check Valve Set  
AA02-0039**



**Pressure Relief  
AA02-0085**



**Fill Tube  
AA02-0035**



**Pump Filter  
AA02-0020**



**Tractor 1.5 Flow Valve-NPT  
No Longer Available**



**Tractor 2.0 Flow Valve-NPT  
No Longer Available**



**Tractor 1.5 Flow Valve-ORB  
KK02-0018**



**Tractor 2.0 Flow Valve-ORB  
KK02-0019**



**Quick Coupler ORB  
Long Body**



## Common Hydraulic Replacement Parts



**Float Valves G & J**  
AA02-0151



**Float Wings Out 4W**  
AA02-0153



**Float Raise Valve B**  
AA02-0156



**Float Lower Valve A**  
AA02-0160



**Float Wings Valve E & F**  
AA02-0152



**Float Wing Checks C & D**  
AA02-0149



**Float Relief Valve**  
AA02-0159



**Float Counter Balance**  
AA02-0139



**Float Drop Speed**  
AA02-0155



## Ebling BACK BLADE Hydraulic Power Units



2024-Current Vertical  
Float HW Power Unit  
AA02-0007-F



2013-Current Vertical  
Standard HW Power Unit  
AA02-0007



2014-Current Vertical  
Fixed Wing Power Unit  
AA02-0010



2017-Current Vertical  
Sidekick Power Unit  
AA02-0011



Prior To 2013 Horizontal  
Hydraulic Wing Power Unit  
**NO LONGER AVAILABLE**



Prior To 2013 Horizontal  
Fixed Wing Power Unit  
**NO LONGER AVAILABLE**



### BACK BLADE Cylinders



Wing Cyl 7/16" Bushing  
ORB Ports 17-Curr AA02-0052



Wing Cyl 1/2" Bushing  
ORB Ports 17-Curr AA02-0054



HW & FW Lift Cyl  
ORB Ports 17-Curr AA02-0053



Wing Cyl 7/16" Bushing  
NPT Ports 16-Prior Unavailable



Wing Cyl 1/2" Bushing  
NPT Ports 16-Prior Unavailable



HW & FW Lift Cyl  
NPT Ports 16-Prior Unavailable



Sidekick Lift Cyl  
NPT Ports 16-Prior Unavailable  
ORB Ports 17-Curr AA02-0001

### Wing Cylinder Shear Bolts & Bushings

7/16" Shear Bolt	AA03-0002
7/16" Arm Bushing	AA16-0042
7/16" Cyl Clevis Bushing	AA16-0040
1/2" Shear Bolt	AA03-0003
1/2" Arm Bushing	AA16-0043
1/2" Cyl Clevis Bushing	AA16-0041



## Hydraulic Adapters Old (-2016) vs New (2017+)

<u>Cylinder/Hose</u>	<u>E&amp;S Number</u>
SAE style wing cyl	KK02-0006
SAE style lift cyl	KK02-0005
NPT style wing cyl	Hose End/No Adapter
NPT style lift cyl	KK02-0007
SAE wing cyl to old hose	KK02-0004
SAE lift cyl to old hose	KK02-0010
NPT wing cyl to new hose	KK02-0003
NPT lift cyl to new hose	KK02-0008

- \* 2016 & Prior hoses had male NPT ends
- \* 2017 to Current hoses have female JIC ends
- \* 2016 & Prior cylinders have NPT ports
- \* 2017 to Current cylinders have SAE ports

**The Following Kits Replace the 10 Hoses With Bulkhead Fittings On 2014  
Through 2016 Models & 2008-2013 Horizontal Pumps**

**6 Hoses ONLY Replacement Kit AA02-0146**  
**08-13 NPT Cyls to JIC Hoses Adapter Kit AA02-0166A**  
**14-16 NPT Cyls to JIC Hoses Adapter Kit AA02-0147A**  
**17-Curr SAE Cyls to JIC Hoses Adapter Kit AA02-0148A**



## **Hose & Fitting Changes Made In 2017**



**2016 & Prior Model Years Had Male  
NPT Ends On All Hoses**



**2017 & Newer Model Years Have Female  
JIC Ends On All Hoses**



## 2008 - 2016 All Backblade Hoses-NPT Fittings

<u>Description</u>	<u>Part #</u>	<u>BB style</u>
26" HW pump to dead end lift cyl	Special Order	Truck HW
29" HW pump to live end lift cyl	Special Order	Truck HW
37" Pump to bulkhead	Special Order	Truck HW
37" Bulkhead to dead end wing cyl	Special Order	Truck HW
41" Bulkhead to live end wing cyl	Special Order	Truck HW
45" Bulkhead to dead end wing cyl	Special Order	Truck HW (102"MB)
49" Bulkhead to live end wing cyl	Special Order	Truck HW (102"MB)
26" FW pump to dead end lift cyl	Special Order	Truck FW Vert Pump
29" FW pump to live end lift cyl	Special Order	Truck FW Vert Pump
26" FW pump to dead end lift cyl	Special Order	Truck FW Horz Pump
29" FW pump to live end lift cyl	Special Order	Truck FW Horz Pump
96" to dead end wing cyl	Special Order	Tractor 30&24x96
102" to live end wing cyl	Special Order	Tractor 30&24x96
84" to dead end wing cyl	Special Order	Tractor24x72
90" to live end wing cyl	Special Order	Tractor24x72

## 2017 To Current Truck Backblade Hoses-JIC Fittings

<u>Description</u>	<u>Part #</u>	<u>BB style</u>
26" HW pump to dead end lift cyl	AA02-0056	Truck HW & SK
29" HW pump to live end lift cyl	AA02-0057	Truck HW & SK
61" pump to dead end wing	AA02-0041	Truck HW
68" pump to live end wing	AA02-0042	Truck HW
26" FW pump to dead end lift cyl	AA02-0058	Truck FW
29" FW pump to live end lift cyl	AA02-0059	Truck FW

## 2017 To 2023 (half year) Tractor Hoses-JIC Fittings

### Long Flow Restrictors

96" to dead end wing cyl-Bucher Valve	Special Order	Tractor 30&24x96
102" to live end wing cyl-Bucher Valve	Special Order	Tractor 30&24x96
84" to dead end wing cyl-Bucher Valve	Special Order	Tractor24x72
90" to live end wing cyl-Bucher Valve	Special Order	Tractor24x72

## 2023 (half year) To Current Tractor Hoses-JIC Fittings

### Short Flow Restrictors

96" to dead end wing cyl-FCI Valve	AA02-0142	Tractor 30&24x96
102" to live end wing cyl-FCI Valve	AA02-0143	Tractor 30&24x96
84" to dead end wing cyl-FCI Valve	AA02-0144	Tractor24x72
90" to live end wing cyl-FCI Valve	AA02-0145	Tractor24x72



## HW & FW Common Weldment Replacement Parts



Upper Linkage Arm Assy  
AA16-0028A



Lower Linkage Arm Left  
AA16-0020A



Lower Linkage Arm Right  
AA16-0021A



Spring Bar  
AA16-0047



Square Stand W/ Foot  
AA16-0004A



QD Attachment Pin  
AA16-0025A



Hinge Pin 21" MB  
AA16-0019A



Hinge Pin 24" MB  
AA16-0017A



Hinge Pin 30" MB  
AA16-0018A



### HW & FW Common Weldment Replacement Parts



**FW Wing Support Bar**  
AA16-0085



**T Bolt**  
AA16-0026A



**3-QD Channels**  
BA04-QDC-01, 02, 03



**FW & HW Cover Base**  
AA16-0105A



**FW Cover Top**  
AA16-0104A



**HW Cover Top**  
AA16-0103A



**HW Cover Filler Plate**  
AA16-0107



**Round Stand W/ Foot**  
AA16-0024A



**QD Pin - Long**  
AA16-0117A



## Wing Weldments - No Edges or Flags - Red Only

Truck	FW	Left	AA04-0007A	Right	AA04-0008A
Truck	12'	Left	AA04-0013A	Right	AA04-0014A
Truck	14'	Left	AA04-0015A	Right	AA04-0016A
Truck	16'	Left	AA04-0017A	Right	AA04-0018A
Tractor	24" x 10' & 12'	Left	AA04-0019A	Right	AA04-0020A
Tractor	24" x 14' & 16'	Left	AA04-0038A	Right	AA04-0039A
Tractor	30" x 16'	Left	AA04-0021A	Right	AA04-0022A
Tractor	30" x 2'	Left	AA04-0053A	Right	AA04-0054A
Tractor	30" x 4'	Left	AA04-0055A	Right	AA04-0056A



## QD Arms - Black Hex Arms No Longer Available



### QD Arms

23" - AA04-0052A

25" - AA04-0051A

### Spacer Plates

5/16" - AA16-0115

1/2" - AA16-0012

5/8" - AA16-0013



## Moldboard Sleeve Weldments No Edges or Flags - Red Only



**2014 ONLY** Hydraulic Wing Sleeve Left  
AA04-0011 **NO LONGER AVAILABLE**



**2014 ONLY** Hydraulic Wing Sleeve Right  
AA04-0012 **NO LONGER AVAILABLE**



**2014 ONLY** Fixed Wing Sleeve Left  
AA04-0023 **NO LONGER AVAILABLE**



**2014 ONLY** Fixed Wing Sleeve Right  
AA04-0024 **NO LONGER AVAILABLE**



sidekick Sleeve Weldment Left  
AA04-0041A



sidekick Sleeve Weldment Right  
AA04-0042A



## HW & FW Common Electrical Replacement Parts



Remote Switch w/Boot  
AA01-0011



On/Off Amber Switch  
AA01-0015



DPDT Toggle Switch  
AA01-0014



Toggle Ext Red  
AH16-0002



Toggle Ext Black  
AH16-0001



Controller Relay  
AA01-0016



Power Plug  
AA01-0017



Plug Cover  
AA16-0068



Solenoid Flat Base  
AA01-0005



## HW & FW Common Electrical Replacement Parts



**Circuit Breaker  
AA01-0010**



**HD Coil  
AA01-0001**



**Truck Side Plug  
AA01-0043**



**Plug Boot  
AA01-0044**



**Recessed Switch Plate  
AA01-0055**



**Plow Side Plug  
AA01-0045**



**Standard Motor  
AA01-0007**



**HD Motor  
AA01-0039**



**4 Pin Truck Side Repair Kit  
AA01-0049A**



## HW & FW Common Electrical Replacement Parts



**4 Pin Switch Side Repair Kit  
AA01-0047A**



**6 Pin Truck Side Repair Kit  
AA01-0070A**



**6 Pin Switch Side Repair Kit  
AA01-0071A**



**12 Pin Truck Side Repair Kit  
AA01-0048A**



**12 Pin Control Side Repair Kit  
AA01-0050A**



**FW Controller Toggle  
2013-Current Wiring  
AA01-0004**



**HW Controller Toggles  
2013-Current Wiring**



**Solenoid Curved Base  
AA01-0003**



**Power Plug Gray  
AA01-0018**



## HW & FW Common Electrical Replacement Parts



**HW Controller Rockers  
2013-Current Wiring  
AA01-0068**



**FW Controller Rockers  
2013-Current Wiring  
AA01-0069**



**SPDT Toggle Switch  
AA01-0073**



**SPDT Rocker Switch Base  
AA01-0074**



**LED Round On/Off Switch  
AA01-0072**



**Replacement Diode  
For SPDT Switches  
AA01-0078**



**Rocker Switch Paddle  
Red - Left Wing  
AA01-0076**



**Rocker Switch Paddle  
Red - Right Wing  
AA01-0077**



**Rocker Switch Paddle  
Black - Raise/Lower  
AA01-0075**



## HW & FW Common Electrical Replacement Parts



**SPDT Conversion Kit  
AA01-0079A**



**Battery/Solenoid Cable  
30" - AA01-0053  
42" - AA01-0052**



**Front Ground Strap  
AA01-0054**



**Rear Plug Ground  
AA01-0051**



**Coil Ground Harness  
AA01-0012**



**Float Controller  
2024-Current  
AA02-0002-F**



**Plow Side Complete Kit  
AA01-0006**



**Truck Side Complete Kit  
AA01-0008**



## BACK BLADE Accessories



**SS Sol/Brkr Plate**  
**AA16-0009**



**SS Power Plug Plate**  
**AA16-0008**



**SS Tall Switch Plate**  
**AA16-0172**



**SS Side Switch Plate**  
**AA16-0173**



**Clevis Pin 3/4x2 3/4"**  
**AA03-0004**



**Clevis Pin 3/4x3 1/2"**  
**AA03-0005**



**Rubber Bumper**  
**KJ03-0006**



**Toggle Switch Boot**  
**AA16-0069**



**Solenoid Cover**  
**Horizontal Pumps**  
**AA16-0120**



## BACK BLADE Accessories



**7/8" Vinyl Coated Loop**  
KK00-0009



**Hose Abrasion Wrap**  
18" - KK00-0013  
24" - KK00-0014  
48" - KK00-0012



**Ebling Oval**  
AA07-0011



**Back Blade Decal**  
AA07-0002



**Sidekick Decal**  
AA07-0016



**Flag Decal**  
AA07-0004



**Conspicuity Tape 14"**  
Assorted MB & Wings  
KJ07-0003



**Conspicuity Tape 25"**  
Assorted MB & Wings  
KJ07-0004



**Conspicuity Tape 36"**  
All 16' Wings  
KJ07-0005



## BACK BLADE Accessories



**Conspicuicy Tape 1x3"  
sidekick  
KJ07-0006**



**HW STD Snow Blocker  
AA16-0129**



**HW FLT Snow Blocker  
AA16-0130**



## Common sidekick Replacement Parts



**Toothed Washer  
AA16-0090**



**Adjusting Arm  
AA16-0094**



**Lower Drag Link Arm  
AA16-0093**



**Crosstube  
AA04-0043A**



**Adjustable Insert  
AA16-0089A**



**Stand Assembly  
AA16-0121A**



**Ratchet w/ Strap  
KK03-0005**



**Pump Cover Bottom  
AA16-0091A**



**Pump Cover Top  
AA16-0092A**



### Common sidekick Replacement Parts



**Sidekick Truckside  
Harness Kit  
AA01-0024**



**Sidekick Plowside  
Harness Kit  
AA01-0023**



**FW Controller Toggle  
2013-Current Wiring  
AA01-0004**



**Clevis Pin 5/8x2 1/2"  
AA03-0032**



**Clevis Pin 5/8x3 1/2"  
AA03-0012**



**Clevis Pin 5/8x3"  
AA03-0011**



**Circuit Breaker 100A  
AA01-0025**



**Power Plug  
AA01-0019**



**Control Plug  
AA01-0031**



## Common sidekick Replacement Parts



**Power Plug Cover**  
AA01-0066



**Control Plug Cover**  
AA01-0065



**T Bolt**  
AA16-0026A



**FW Controller Rocker**  
2013-Current Wiring  
AA16-0069

**See HW & FW Common Electrical  
Replacement Parts For Sidekick  
Controller Parts**



## **Support Information**

**Shear Bolt Warning  
Mount & Arm Guide**

**If You Have Technical Questions  
Please Contact Us At**

**Ebling Snowplows  
4484 Roger B Chaffee Blvd SE  
Kentwood, MI 49548**

or

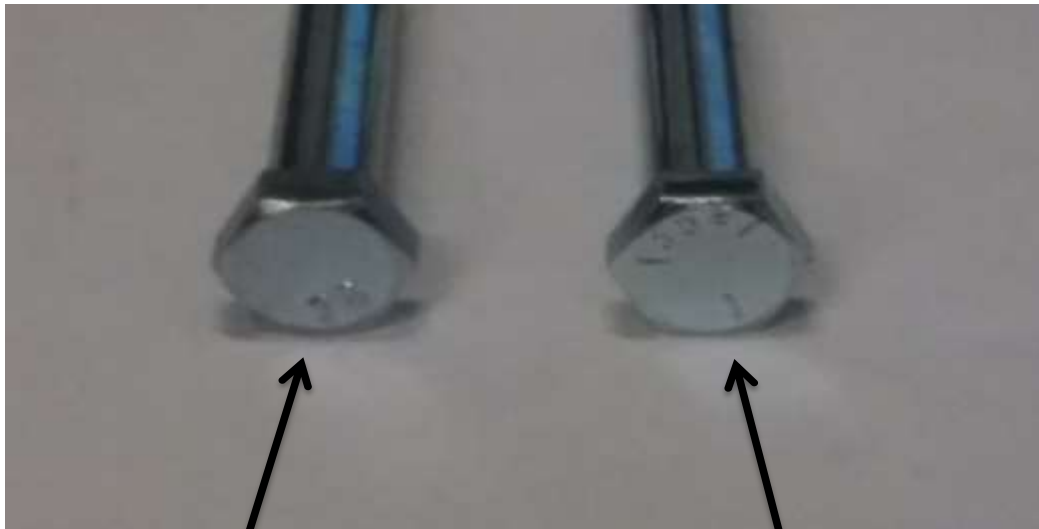
**(616) 532-8400 ask for tech support**

or

**[parts@eblingsnowplows.com](mailto:parts@eblingsnowplows.com)**



# CAUTION !



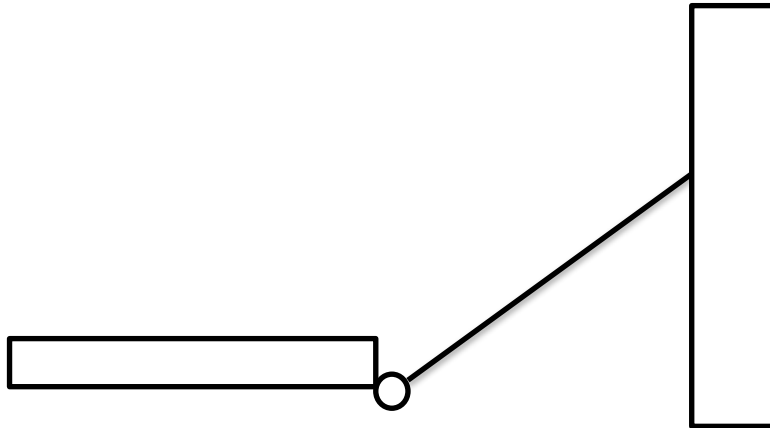
No Hash Marks  
Grade 2

3 Hash Marks  
Grade 5

**When Servicing Or Inspecting A Customers BACK BLADE Always  
Take Time To Check Shear Bolts, Drivers Have Been Known To  
Use Whatever They Have Available To Keep Plowing  
After A Bolt Has Sheared  
Grade 2 Bolts Must Be Used For All Shear Bolts  
Damage Will Occur If A Higher Grade Bolt Is Used**

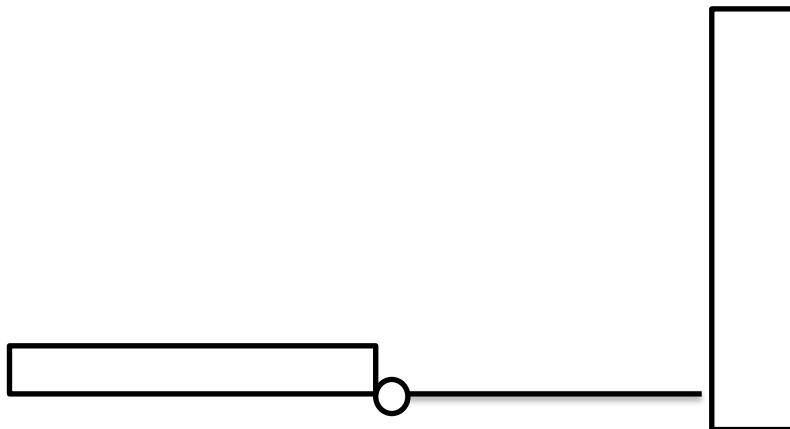


# CAUTION!



**DO NOT plow against curbing with wing partially open**

**Damage to hinge knuckles and cylinder will occur not covered by warranty!**



**Plowing against curbing IS NOT recommended, if you do make sure wing is fully open in order for the shear bolt to work as designed if an obstruction is hit.**



## Truck Mount Fit Guide

The Following Truck Mounts Are Approved By Ebling For The Model,  
Year, Make And Frame Style Shown. Any Back Blade Installed On A  
Custom Or Modified Mount May Void Warranty

### Truck Mount/QD Arm Settings

Mount	Vehicle (1)	Vehicle Rating	Arm Length	Arm Position	Arm Flat Edge	Inside Arm Width	QD w/ Single Hex Plate Spacer (3)
1A (4)	Dodge 03-10 Long Box	3/4 or 1 Ton	25 1/4"	Inside	Down	37"	5/16" & 1/2"
1B (4)	Dodge 03-10 Short Box	3/4 or 1 Ton	25 1/4"	Inside	Down	37"	5/16" & 1/2"
1J (2)(4)(5)	Dodge 11-Current 2500/11-18 3500	3/4 or 1 Ton*	23 1/4"	Inside	Up (2)	37"	5/16" & 1/2"
1K (2)(4)(5)	Dodge 11-Current 2500/11-18 3500 & 19-Current 3500 (Supercedes 1J Mount)	3/4 or 1 Ton*	23 1/4"	Inside	Up (2)	37"	5/16" & 1/2"
2A	Ford 99-07 All	3/4 or 1 Ton	25 1/4"	Inside	Down	38"	5/16"
2B	Ford 08-16 All	3/4 or 1 Ton	23 1/4"	Inside	Down	38"	5/16"
2M (2)	Ford 17-22 All - 2" Receiver	3/4 or 1 Ton	23 1/4"	Outside	Up (2)	42 1/4"	5/16"
2N (2)	Ford 17-22 All - 2 1/2" Receiver	3/4 or 1 Ton	23 1/4"	Outside	Up (2)	42 1/4"	5/16"
2O (2)	Ford 23-All - 2" Receiver	3/4 or 1 Ton	23 1/4"	Outside	Up (2)	42 1/4"	5/16"
2P (2)	Ford 23-All - 2 1/2" Receiver	3/4 or 1 Ton	23 1/4"	Outside	Up (2)	42 1/4"	5/16"
3A	GM 01-07 Long Box Classic	3/4 or 1 Ton	23 1/4"	Outside	Down	42 1/4"	5/16"
3B	GM 01-07 Short Box Classic	3/4 or 1 Ton	23 1/4"	Outside	Down	42 1/4"	5/16"
3C	GM 07.5-10 Long Box	3/4 or 1 Ton	23 1/4"	Outside	Down	42 1/4"	5/16"
3D	GM 07.5-10 Short Box	3/4 or 1 Ton	23 1/4"	Outside	Down	42 1/4"	5/16"
3L	GM 11-14 Long Box	3/4 or 1 Ton	23 1/4"	Outside	Down	42 1/4"	5/16"
3M	GM 11-14 Short Box	3/4 or 1 Ton	23 1/4"	Outside	Down	42 1/4"	5/16"
3O	GM 15-19 Long Box	3/4 or 1 Ton	23 1/4"	Inside	Down	36 3/4"	5/16" & 5/8"
3R	GM 15-19 Short Box	3/4 or 1 Ton	23 1/4"	Inside	Down	36 3/4"	5/16" & 5/8"
3W (4)	GM 20-21 All - Discontinued	3/4 or 1 Ton	23 1/4"	Inside	Down	36 3/4"	5/16" & 5/8"
3X (4)	GM 20-21 All - Discontinued	3/4 or 1 Ton	23 1/4"	Inside	Down	36 3/4"	5/16" & 5/8"
3Y (4)	GM 20-Current All (Supercedes 3X Mount)	3/4 or 1 Ton	23 1/4"	Inside	Down	36 3/4"	5/16" & 5/8"
CC(6)	All Cab & Chassis Applications	N/A(6)	25 1/4"	Inside	N/A(6)	N/A(6)	N/A(6)

(1) NOTE - ALL FRAMES MUST BE PICK UP BOX FRAMES OR BOX DELETE - CAB & CHASSIS NOT STANDARD DUALY, CAB & CHASSIS AND FLATBED TRUCKS MAY BE COMPATABLE WITH THE EBLING BACK BLADE. CONTACT EBLING FOR ADDITIONAL INFORMATION.

(2) NOTE - 17-CURRENT FORD 2M MOUNTS, 2018-CURRENT DODGE 1F & 1J & 2019-Dodge 3500 1K MOUNTS MUST BE INSTALLED WITH FLAT SIDE OF ARM UP FOR TAILGATE CLEARANCE.

(3) NOTE - ALL OLD STYLE (-2015) QDS W/ DOUBLE HEX PLATES DO NOT REQUIRE THE 5/16" SPACER PLATES. THESE QDS MUST USE BEVELED EDGED ARMS TO CLEAR WELDS. CONTACT EBLING FOR ADDITIONAL INFORMATION.

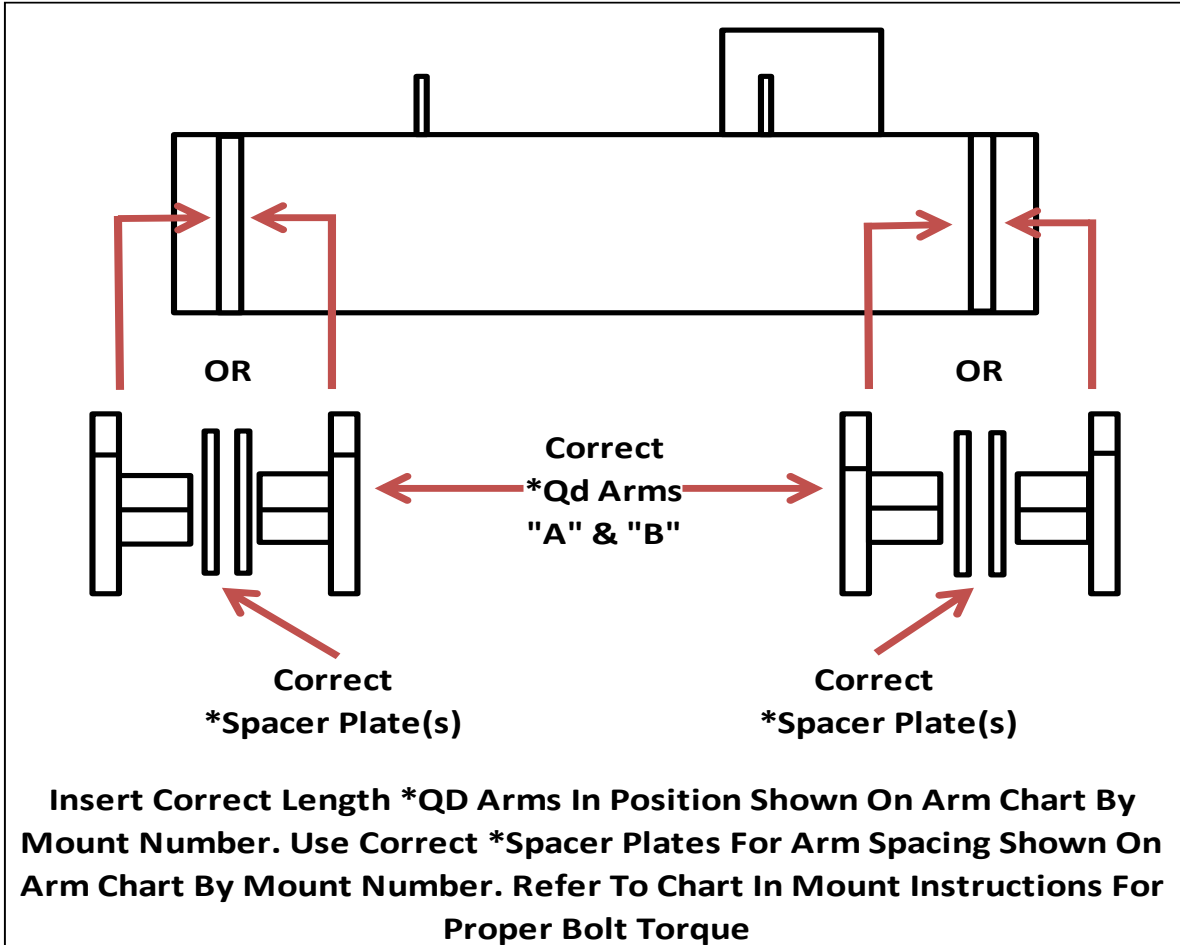
(4) NOTE - ALL DODGE AND 2020 GM BACK BLADE MOUNTS ARE USED IN CONJUNCTION WITH THE OEM RECEIVER HITCH. EBLING V-5 HITCH NOT INCLUDED ON DODGE OR 2020 GM MOUNTS

(5) NOTE - ALL DODGES WITH REAR BUMPER LOWER PLASTIC FASCIA MUST REMOVE OR TRIM FOR MOUNT CLEARANCE

(6) NOTE - ALL CAB & CHASSIS MOUNTS ARE A CUSTOM SITUATION AND ARMS/SPACER PLATES WILL BE MOUNTED IN ACCORDANCE WITH DESIGN AND CAB & CHASSIS CUSTOM QD CHANNEL



## Follow Directions For Your Particular Mount On The Truck Mount Fit Guide



Flat Side Of QD Arm