



2020-Current GM 2500HD Short & Long Box 3X Mount Instructions

Step 1 – Lay out Ebling parts and hardware to familiarize yourself with contents.

Step 2 – Remove spare tire from underside of truck and set aside.

Step 3 – Also remove heat shield on right side of vehicle (this will not be reinstalled).

Step 4 – Remove OEM bolts from the rear bottom of frame rail, both sides. Then remove OEM bolts that are next closest to front of truck on the bottom of frame rail.

Step 5 – Raise Ebling mount into position against frame, re-use OEM bolts removed in Step 3 and snug bolts so mount is against frame.

Step 6 – You will now need to drill the 2 remaining holes through the frame and install $\frac{1}{2}$ " x $1 \frac{3}{4}$ " bolts and grade 8 USS flat washers from inside frame out. Finish with Grade 8 USS flat washer, lock washer and nut.

Step 7 – Make sure mount is centered on frame and tighten all 6 bolts to torque specifications shown on chart.

Step 8 – One side at a time remove OEM bolt at the rear inside side of the frame (This bolt passes through the frame and has a double nut on the outside of frame, loosening the outside nut first will ease in removing the bolt). Once this bolt is removed, put the bolt through the side support plate and return bolt to the frame.

Step 9 – Attach the side support plate to the mount using $\frac{1}{2}$ "x $1 \frac{1}{2}$ " bolts, lock washers and nuts, from the outside in.

Step 10 – Repeat for other side of mount.

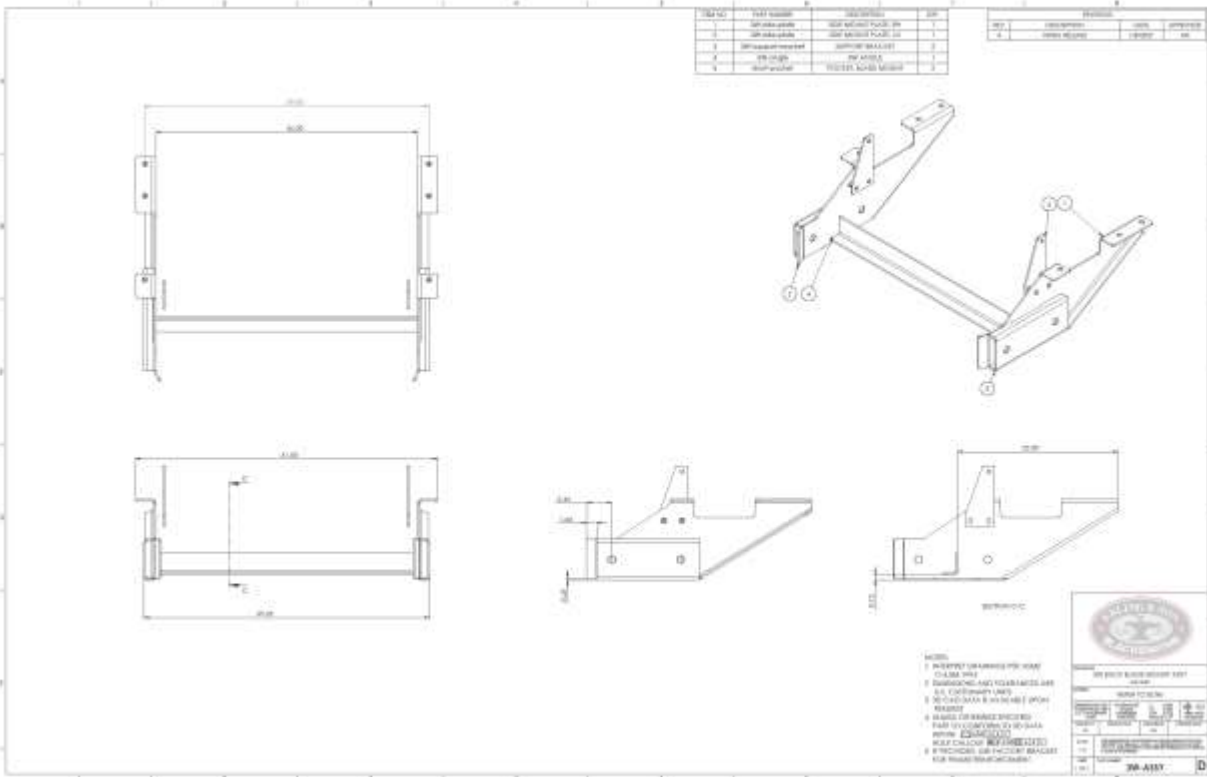


Step 11 – Torque all bolts as specified on chart. Return spare tire to its original position.

NOTE: All parts and hardware included for the 3X mount must be used in the installation. Any missing or non-OEM parts or hardware will void warranty.

NOTE: On some models of the 2020 GM 2500 & 3500 the exhaust pipe may be close enough to the mount to possibly cause a rattle. If this is the case simply dent the side of the exhaust pipe causing the contact or heat and bend the pipe for clearance.

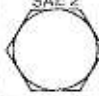


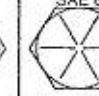

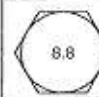
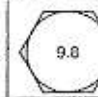
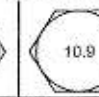
Installation of mount is complete.





TORQUE SPECIFICATIONS

BEFORE DRIVING YOUR VEHICLE, YOU SHOULD CHECK THE TORQUE ON ALL NUTS AND BOLTS IN THE KIT, INCLUDING ANY SLIDER BOLTS ON THE CALIPERS. RE-TORQUE CALIPER BOLTS AFTER 500 MILES. ALL SPECIFICATIONS ARE IN FT-LBS.

BOLT GRADES				
U.S.				
Metric				
Steel Type	Low Carbon (soft)	Medium Carbon Heat Treat	Medium Carbon Alloy	Medium Carbon Alloy

SAE	Bolt Grade	2	2	5	5	7	7	8	8	Socket Head Cap Screw	Socket Head Cap Screw
Bolt Dia.	Thread per inch	Dry	Oiled	Dry	Oiled	Dry	Oiled	Dry	Oiled	Dry	Oiled
1/4"	20	4	3	8	6	10	8	12	9	14	11
1/4"	28	6	4	10	7	12	9	14	10	16	13
5/16"	18	9	7	17	13	21	16	25	18	29	23
5/16"	24	12	9	19	14	24	18	29	20	33	26
3/8"	16	16	12	30	23	40	30	45	35	49	39
3/8"	24	22	16	35	25	45	35	50	40	54	44
7/16"	14	24	17	50	35	60	45	70	55	76	61
7/16"	20	34	26	55	40	70	50	80	60	85	68
1/2"	13	36	31	75	55	95	70	110	80	113	90
1/2"	20	52	42	90	65	100	80	120	90	126	100
9/16"	12	52	42	110	80	135	100	150	110	163	130
9/16"	18	71	57	120	90	150	110	170	130	181	144
5/8"	11	98	78	150	110	140	140	220	170	230	184
5/8"	18	115	93	180	130	210	160	240	180	255	204
3/4"	10	157	121	260	200	320	240	380	280	400	320
3/4"	16	160	133	300	220	380	280	420	320	440	350
7/8"	9	210	160	430	320	520	400	600	450	640	510
7/8"	14	230	177	470	360	580	440	660	500	700	560
1"	8	320	240	640	480	800	600	900	680	980	780
1"	12	350	265	710	530	660	660	900	740	1060	845

METRIC	5.8	8.8	9.8	10.9
Bolt Dia.	Oiled	Oiled	Oiled	Oiled
5mm	3.5	5	6	8
6mm	6	9	10.5	12
8mm	15	22	25	32
10mm	29	44	51	62
12mm	51	76	89	111