



2008-2011 GM 2500HD Long Box 3C Mount Instructions

Step 1 – Lay out Ebling parts and hardware to familiarize yourself with contents.

Step 2 – Remove wire loom clips from factory hitch or any wire looms that may interfere with removal of factory hitch. Also remove 2 bolts near bottom center of bumper attaching it to hitch plate (these will not be re-used).

Step 3 – Remove 4 factory bolts from front of existing hitch, 2 on each side (these will not be reused). Support hitch and remove 2 remaining bolts from rear of hitch, 1 on each side (these will be reused). Slowly lower hitch and set aside.

Step 4 – Remove bolt clips from inside frame rails from front hitch bolts (these will not be reused).

Step 5 – Raise Ebling mount into position against frame, re-use factory bolts from rear of hitch, 1 each side, finger tighten only.

Step 6 – Put 2 hole backer plates inside frame rails at front of hitch, place 4 - ½" x 1 ¾" bolts through backer plate, frame and mount, finish with ½" flat washers, lock washers and nuts. 2 each side.

Step 7 – Make sure mount is centered on frame and tighten all 6 bolts to torque specifications shown on chart.

Step 8 – Now remove 2 bumper bracket nuts from left side of frame, place side support plate over bolts and mark holes to be drilled in plate.

Step 9 – drill 2- 9/16" holes as marked on plate, place plate over bumper bracket bolts and start nuts. Put ½" x 1 ½' bolts from outside in through mount and side plate, finish with ½" lock washers and nuts. Finger tighten.

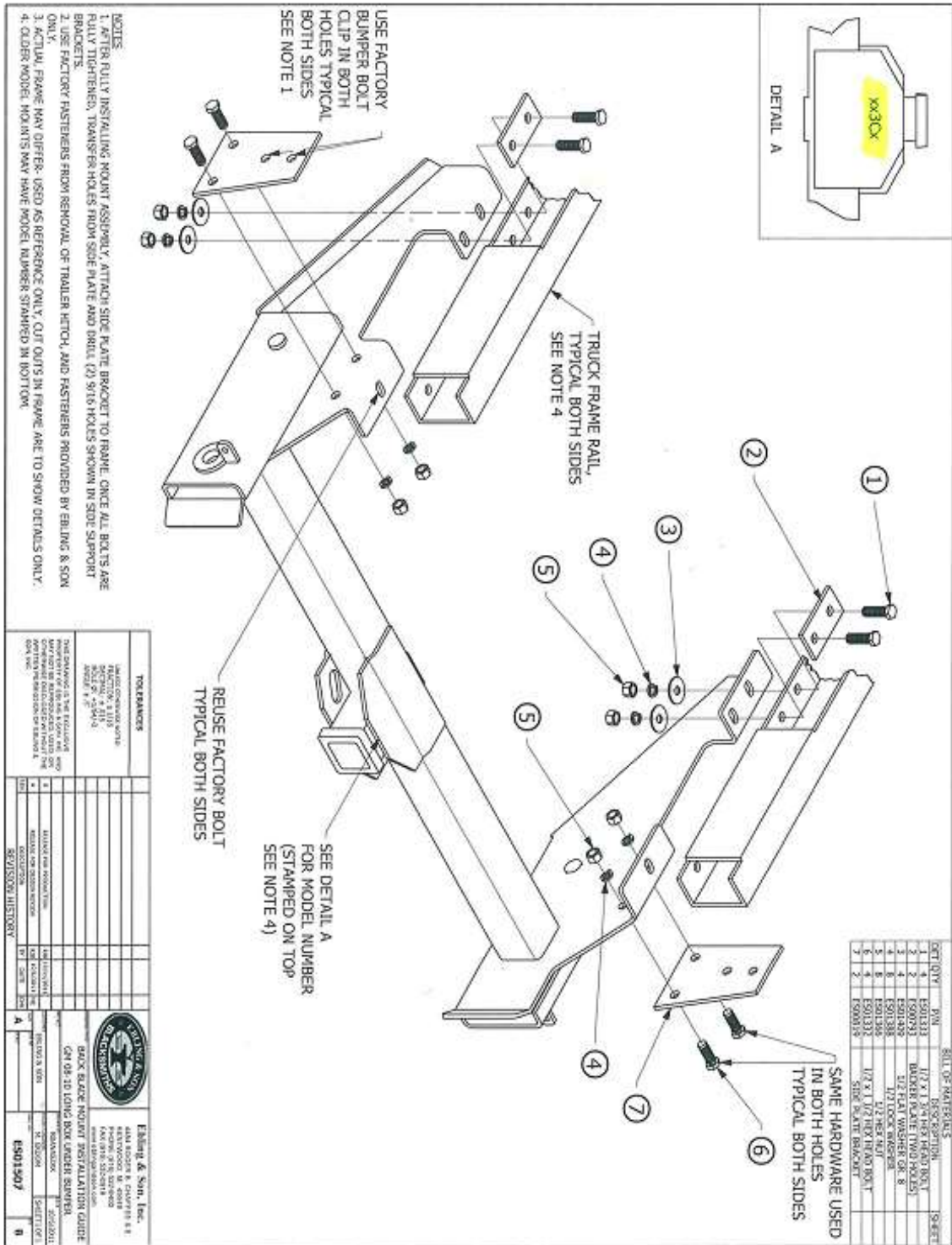
Step 10 – Repeat step 9 on right side.



Step 11 – Making sure the bumper is level and centered, tighten all bumper bracket bolts and side support plate bolts to torque specifications on chart.

* All parts and hardware included for the 3C mount must be used in the installation. Any missing or non-OEM parts or hardware will void warranty.

Installation of mount is complete



- NOTES**
1. AFTER FULLY INSTALLING MOUNT ASSEMBLY, ATTACH SIDE PLATE BRACKET TO FRAME. ONCE ALL BOLTS ARE FULLY TIGHTENED, TRANSFER HOLES FROM SIDE PLATE AND DRILL (2) 9/16 HOLES SHOWN IN SIDE SUPPORT BRACKETS.
 2. USE FACTORY FASTENERS FROM REMOVAL OF TRAILER HITCH, AND FASTENERS PROVIDED BY EBLING & SON ONLY.
 3. ACTUAL FRAME MAY DIFFER. USED AS REFERENCE ONLY. CUT CUTS IN FRAME ARE TO SHOW DETAILS ONLY.
 4. OLDER MODEL MOUNTS MAY HAVE MODEL NUMBER STAMPED IN BOTTOM.

USE FACTORY BUMPER BOLT CLIP IN BOTH HOLES TYPICAL BOTH SIDES SEE NOTE 1

TRUCK FRAME RAIL, TYPICAL BOTH SIDES SEE NOTE 4

REUSE FACTORY BOLT TYPICAL BOTH SIDES

SEE DETAIL A FOR MODEL NUMBER (STAMPED ON TOP) SEE NOTE 4)

SAME HARDWARE USED IN BOTH HOLES TYPICAL BOTH SIDES

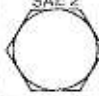


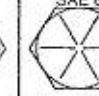

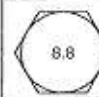
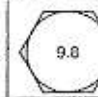
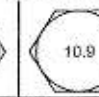
QTY	PN	DESCRIPTION	UNIT
1	1501313	1/2" X 1/2" BUMPER BOLT	1
2	1501311	BUMPER BOLT (TWO HOLES)	2
3	1501345	1/2" FLAT WASHER OR 8	2
4	1501338	1/2" LOCK WRENCH	1
5	1501355	1/2" HEX NUT	2
6	1501311	1/2" X 1/2" BUMPER BOLT	2
7	1500315	1/2" X 1/2" BUMPER BOLT	2

TOLERANCES		FINISHES	
UNLESS OTHERWISE NOTED	DECIMALS	UNLESS OTHERWISE NOTED	FINISH
0.005	FRACTIONS	0.005	0.005
0.010	FRACTIONS	0.010	0.010
0.015	FRACTIONS	0.015	0.015
0.020	FRACTIONS	0.020	0.020
0.030	FRACTIONS	0.030	0.030
0.040	FRACTIONS	0.040	0.040
0.050	FRACTIONS	0.050	0.050
0.060	FRACTIONS	0.060	0.060
0.070	FRACTIONS	0.070	0.070
0.080	FRACTIONS	0.080	0.080
0.090	FRACTIONS	0.090	0.090
0.100	FRACTIONS	0.100	0.100
0.125	FRACTIONS	0.125	0.125
0.150	FRACTIONS	0.150	0.150
0.1875	FRACTIONS	0.1875	0.1875
0.250	FRACTIONS	0.250	0.250
0.3125	FRACTIONS	0.3125	0.3125
0.375	FRACTIONS	0.375	0.375
0.4375	FRACTIONS	0.4375	0.4375
0.500	FRACTIONS	0.500	0.500
0.625	FRACTIONS	0.625	0.625
0.750	FRACTIONS	0.750	0.750
0.875	FRACTIONS	0.875	0.875
1.000	FRACTIONS	1.000	1.000
1.250	FRACTIONS	1.250	1.250
1.500	FRACTIONS	1.500	1.500
1.750	FRACTIONS	1.750	1.750
2.000	FRACTIONS	2.000	2.000
2.500	FRACTIONS	2.500	2.500
3.000	FRACTIONS	3.000	3.000
3.500	FRACTIONS	3.500	3.500
4.000	FRACTIONS	4.000	4.000
4.500	FRACTIONS	4.500	4.500
5.000	FRACTIONS	5.000	5.000
5.500	FRACTIONS	5.500	5.500
6.000	FRACTIONS	6.000	6.000
6.500	FRACTIONS	6.500	6.500
7.000	FRACTIONS	7.000	7.000
7.500	FRACTIONS	7.500	7.500
8.000	FRACTIONS	8.000	8.000
8.500	FRACTIONS	8.500	8.500
9.000	FRACTIONS	9.000	9.000
9.500	FRACTIONS	9.500	9.500
10.000	FRACTIONS	10.000	10.000
11.000	FRACTIONS	11.000	11.000
12.000	FRACTIONS	12.000	12.000
13.000	FRACTIONS	13.000	13.000
14.000	FRACTIONS	14.000	14.000
15.000	FRACTIONS	15.000	15.000
16.000	FRACTIONS	16.000	16.000
17.000	FRACTIONS	17.000	17.000
18.000	FRACTIONS	18.000	18.000
19.000	FRACTIONS	19.000	19.000
20.000	FRACTIONS	20.000	20.000
21.000	FRACTIONS	21.000	21.000
22.000	FRACTIONS	22.000	22.000
23.000	FRACTIONS	23.000	23.000
24.000	FRACTIONS	24.000	24.000
25.000	FRACTIONS	25.000	25.000
26.000	FRACTIONS	26.000	26.000
27.000	FRACTIONS	27.000	27.000
28.000	FRACTIONS	28.000	28.000
29.000	FRACTIONS	29.000	29.000
30.000	FRACTIONS	30.000	30.000
31.000	FRACTIONS	31.000	31.000
32.000	FRACTIONS	32.000	32.000
33.000	FRACTIONS	33.000	33.000
34.000	FRACTIONS	34.000	34.000
35.000	FRACTIONS	35.000	35.000
36.000	FRACTIONS	36.000	36.000
37.000	FRACTIONS	37.000	37.000
38.000	FRACTIONS	38.000	38.000
39.000	FRACTIONS	39.000	39.000
40.000	FRACTIONS	40.000	40.000
41.000	FRACTIONS	41.000	41.000
42.000	FRACTIONS	42.000	42.000
43.000	FRACTIONS	43.000	43.000
44.000	FRACTIONS	44.000	44.000
45.000	FRACTIONS	45.000	45.000
46.000	FRACTIONS	46.000	46.000
47.000	FRACTIONS	47.000	47.000
48.000	FRACTIONS	48.000	48.000
49.000	FRACTIONS	49.000	49.000
50.000	FRACTIONS	50.000	50.000
51.000	FRACTIONS	51.000	51.000
52.000	FRACTIONS	52.000	52.000
53.000	FRACTIONS	53.000	53.000
54.000	FRACTIONS	54.000	54.000
55.000	FRACTIONS	55.000	55.000
56.000	FRACTIONS	56.000	56.000
57.000	FRACTIONS	57.000	57.000
58.000	FRACTIONS	58.000	58.000
59.000	FRACTIONS	59.000	59.000
60.000	FRACTIONS	60.000	60.000
61.000	FRACTIONS	61.000	61.000
62.000	FRACTIONS	62.000	62.000
63.000	FRACTIONS	63.000	63.000
64.000	FRACTIONS	64.000	64.000
65.000	FRACTIONS	65.000	65.000
66.000	FRACTIONS	66.000	66.000
67.000	FRACTIONS	67.000	67.000
68.000	FRACTIONS	68.000	68.000
69.000	FRACTIONS	69.000	69.000
70.000	FRACTIONS	70.000	70.000
71.000	FRACTIONS	71.000	71.000
72.000	FRACTIONS	72.000	72.000
73.000	FRACTIONS	73.000	73.000
74.000	FRACTIONS	74.000	74.000
75.000	FRACTIONS	75.000	75.000
76.000	FRACTIONS	76.000	76.000
77.000	FRACTIONS	77.000	77.000
78.000	FRACTIONS	78.000	78.000
79.000	FRACTIONS	79.000	79.000
80.000	FRACTIONS	80.000	80.000
81.000	FRACTIONS	81.000	81.000
82.000	FRACTIONS	82.000	82.000
83.000	FRACTIONS	83.000	83.000
84.000	FRACTIONS	84.000	84.000
85.000	FRACTIONS	85.000	85.000
86.000	FRACTIONS	86.000	86.000
87.000	FRACTIONS	87.000	87.000
88.000	FRACTIONS	88.000	88.000
89.000	FRACTIONS	89.000	89.000
90.000	FRACTIONS	90.000	90.000
91.000	FRACTIONS	91.000	91.000
92.000	FRACTIONS	92.000	92.000
93.000	FRACTIONS	93.000	93.000
94.000	FRACTIONS	94.000	94.000
95.000	FRACTIONS	95.000	95.000
96.000	FRACTIONS	96.000	96.000
97.000	FRACTIONS	97.000	97.000
98.000	FRACTIONS	98.000	98.000
99.000	FRACTIONS	99.000	99.000
100.000	FRACTIONS	100.000	100.000



TORQUE SPECIFICATIONS

BEFORE DRIVING YOUR VEHICLE, YOU SHOULD CHECK THE TORQUE ON ALL NUTS AND BOLTS IN THE KIT, INCLUDING ANY SLIDER BOLTS ON THE CALIPERS. RE-TORQUE CALIPER BOLTS AFTER 500 MILES. ALL SPECIFICATIONS ARE IN FT-LBS.

BOLT GRADES				
U.S.				
Metric				
Steel Type	Low Carbon (soft)	Medium Carbon Heat Treat	Medium Carbon Alloy	Medium Carbon Alloy

SAE	Bolt Grade	2	2	5	5	7	7	8	8	Socket Head Cap Screw	Socket Head Cap Screw
Bolt Dia.	Thread per inch	Dry	Oiled	Dry	Oiled	Dry	Oiled	Dry	Oiled	Dry	Oiled
1/4"	20	4	3	8	6	10	8	12	9	14	11
1/4"	28	6	4	10	7	12	9	14	10	16	13
5/16"	18	9	7	17	13	21	16	25	18	29	23
5/16"	24	12	9	19	14	24	18	29	20	33	26
3/8"	16	16	12	30	23	40	30	45	35	49	39
3/8"	24	22	16	35	25	45	35	50	40	54	44
7/16"	14	24	17	50	35	60	45	70	55	76	61
7/16"	20	34	26	55	40	70	50	80	60	85	68
1/2"	13	36	31	75	55	95	70	110	80	113	90
1/2"	20	52	42	90	65	100	80	120	90	126	100
9/16"	12	52	42	110	80	135	100	150	110	163	130
9/16"	18	71	57	120	90	150	110	170	130	181	144
5/8"	11	98	78	150	110	140	140	220	170	230	184
5/8"	18	115	93	180	130	210	160	240	180	255	204
3/4"	10	157	121	260	200	320	240	380	280	400	320
3/4"	16	160	133	300	220	380	280	420	320	440	350
7/8"	9	210	160	430	320	520	400	600	450	640	510
7/8"	14	230	177	470	360	580	440	660	500	700	560
1"	8	320	240	640	480	800	600	900	680	980	780
1"	12	350	265	710	530	660	660	900	740	1060	845

METRIC	5.8	8.8	9.8	10.9
Bolt Dia.	Oiled	Oiled	Oiled	Oiled
5mm	3.5	5	6	8
6mm	6	9	10.5	12
8mm	15	22	25	32
10mm	29	44	51	62
12mm	51	76	89	111