



2008 - 2016 Ford Super Duty 2B Mount Instructions

Step 1 – Lay out Ebling parts and hardware to familiarize yourself with contents.

Step 2 – Remove wire loom clips from factory hitch. Unplug trailer plug and any wire loom for bumper.

Step 3 – Remove 4 factory bolts from each side of existing hitch (make sure hitch is supported while removing these bolts). Slowly drop hitch from frame and remove.

Step 4 – Remove trailer plug and bracket from factory hitch (this will be remounted once mount is installed). Also remove 4 nut clips from inside frame rails (these will not be reused).

Step 5 – Place 5/8" x 2" bolt with flat washer through furthest rear holes, 1 each side.

Step 6 – Raise Ebling mount into position against frame and finish bolts with 5/8" flats, lock washers and nuts. Finger tighten only.

Step 7 – Place remaining 5/8" bolts and flat washers in the other 6 holes (3 each side). Finish bolts as in previous step.

Step 8 – Make sure mount is centered on frame and tighten all 8 - 5/8" bolts to torque specification shown on chart.

Step 9 – Now working on one side at a time, loosen and remove bumper bracket nuts on side of frame, remove bumper bracket from bumper itself.

Step 10 – Position side support plates over frame side bumper bracket bolts and mark holes to be drilled on side plates.



Step 11 – Drill 2 - 9/16” holes where marked and place the plates back on frame bolts, reassemble bumper bracket using factory bolts and nuts. Use ¼”x 1 ½”x 3” spacer plate on bumper side of bracket. Add 2 – ½”x 1 ½” bolts from outside in through side support plate and mount itself. Finish with lock washers and nuts. Finger tighten only at this time.

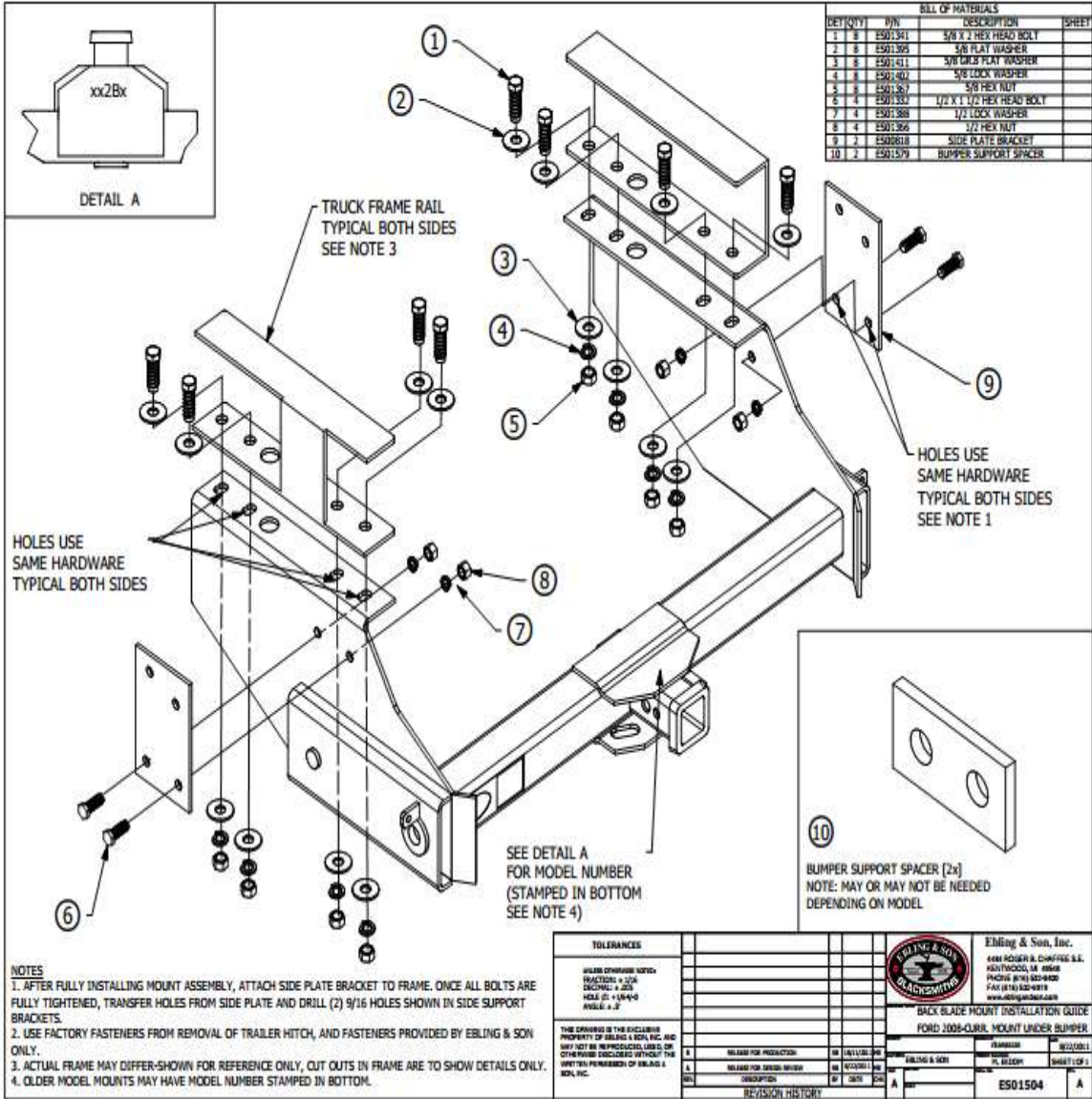
Step 12 – Repeat for other side of truck.

Step 13 – Making sure bumper is straight and level, tighten all bolts to specifications shown on chart.

Step 14 – Now locate spot on bumper to drill and mount trailer plug and bracket removed in step 4. Due to differences in trucks this position is owners choice. Plug in trailer plug and any wire looms removed in step 2.

* All parts and hardware included for the 2B mount must be used in the installation. Any missing or non-OEM parts or hardware will void warranty.

Installation of mount is complete.



DET	QTY	PN	DESCRIPTION	SHEET
1	8	ES01361	5/8 X 2 HEX HEAD BOLT	
2	8	ES01365	5/8 FLAT WASHER	
3	8	ES01411	5/8 CONCS PLAT WASHER	
4	8	ES01402	5/8 LOCK WASHER	
5	8	ES01367	5/8 HEX NUT	
6	4	ES01352	1/2 X 1 1/4 HEX HEAD BOLT	
7	4	ES01368	1/2 LOCK WASHER	
8	4	ES01366	1/2 HEX NUT	
9	2	ES00618	SIDE PLATE BRACKET	
10	2	ES01579	BUMPER SUPPORT SPACER	

NOTES

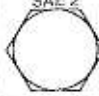


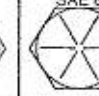

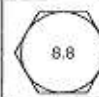
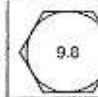
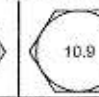
1. AFTER FULLY INSTALLING MOUNT ASSEMBLY, ATTACH SIDE PLATE BRACKET TO FRAME. ONCE ALL BOLTS ARE FULLY TIGHTENED, TRANSFER HOLES FROM SIDE PLATE AND DRILL (2) 9/16 HOLES SHOWN IN SIDE SUPPORT BRACKETS.
2. USE FACTORY FASTENERS FROM REMOVAL OF TRAILER HITCH, AND FASTENERS PROVIDED BY EBLING & SON ONLY.
3. ACTUAL FRAME MAY DIFFER—SHOWN FOR REFERENCE ONLY, CUT OUTS IN FRAME ARE TO SHOW DETAILS ONLY.
4. OLDER MODEL MOUNTS MAY HAVE MODEL NUMBER STAMPED IN BOTTOM.

TOLERANCES		FINISHES		MATERIALS	
UNLESS OTHERWISE SPECIFIED	FRACTIONS ± .004	ALL SURFACES	AS SUPPLIED	STEEL	AS SPECIFIED
DECIMALS ± .003	ANGLES ± .3°	WELDING	AS SPECIFIED	WELDING	AS SPECIFIED
<p>THIS DRAWING IS THE EXCLUSIVE PROPERTY OF EBLING & SON, INC. AND MAY NOT BE REPRODUCED, COPIED, OR OTHERWISE DISCLOSED WITHOUT THE WRITTEN PERMISSION OF EBLING & SON, INC.</p>					
<p>DATE: 01/15/10</p> <p>DESIGNER: [REDACTED]</p> <p>CHECKED: [REDACTED]</p> <p>APPROVED: [REDACTED]</p>		<p>EBLING & SON BLACKSMITH</p> <p>EBling & Son, Inc. 4888 HOLLER BL. CONROE, TX 75748 P.O. BOX 602-8400 FAX: 817-522-4818 www.eblingson.com</p> <p>BACK BLADE MOUNT INSTALLATION GUIDE FORD 2006-CURR. MOUNT UNDER BUMPER</p> <p>DATE: 01/15/10</p> <p>REV: 01/15/10</p> <p>ES01504</p>			



TORQUE SPECIFICATIONS

BEFORE DRIVING YOUR VEHICLE, YOU SHOULD CHECK THE TORQUE ON ALL NUTS AND BOLTS IN THE KIT, INCLUDING ANY SLIDER BOLTS ON THE CALIPERS. RE-TORQUE CALIPER BOLTS AFTER 500 MILES. ALL SPECIFICATIONS ARE IN FT-LBS.

BOLT GRADES				
U.S.				
Metric				
Steel Type	Low Carbon (soft)	Medium Carbon Heat Treat	Medium Carbon Alloy	Medium Carbon Alloy

SAE	Bolt Grade	2	2	5	5	7	7	8	8	Socket Head Cap Screw	Socket Head Cap Screw
Bolt Dia.	Thread per inch	Dry	Oiled	Dry	Oiled	Dry	Oiled	Dry	Oiled	Dry	Oiled
1/4"	20	4	3	8	6	10	8	12	9	14	11
1/4"	28	6	4	10	7	12	9	14	10	16	13
5/16"	18	9	7	17	13	21	16	25	18	29	23
5/16"	24	12	9	19	14	24	18	29	20	33	26
3/8"	16	16	12	30	23	40	30	45	35	49	39
3/8"	24	22	16	35	25	45	35	50	40	54	44
7/16"	14	24	17	50	35	60	45	70	55	76	61
7/16"	20	34	26	55	40	70	50	80	60	85	68
1/2"	13	36	31	75	55	95	70	110	80	113	90
1/2"	20	52	42	90	65	100	80	120	90	126	100
9/16"	12	52	42	110	80	135	100	150	110	163	130
9/16"	18	71	57	120	90	150	110	170	130	181	144
5/8"	11	98	78	150	110	140	140	220	170	230	184
5/8"	18	115	93	180	130	210	160	240	180	255	204
3/4"	10	157	121	260	200	320	240	380	280	400	320
3/4"	16	160	133	300	220	380	280	420	320	440	350
7/8"	9	210	160	430	320	520	400	600	450	640	510
7/8"	14	230	177	470	360	580	440	660	500	700	560
1"	8	320	240	640	480	800	600	900	680	980	780
1"	12	350	265	710	530	660	660	900	740	1060	845

METRIC	5.8	8.8	9.8	10.9
Bolt Dia.	Oiled	Oiled	Oiled	Oiled
5mm	3.5	5	6	8
6mm	6	9	10.5	12
8mm	15	22	25	32
10mm	29	44	51	62
12mm	51	76	89	111