



2003-2010 Dodge Short Box 1B Mount Instructions

Step 1 – Lay out Ebling parts and hardware to familiarize yourself with contents.

Step 2 – Loosen factory bumper bracket nuts and plates to ease in positioning of mount to truck frame and remove 1 bolt, washer and nut on each side through side plate (these will be reused, refer to dwg for position).

Step 3 – Place ¼" x 2" x 2" backing plate with offset hole inside frame rail with hole facing rear as to line up with existing hole in frame. Place 5/8" x 2" bolt through backing plate and frame. Both sides.

Step 4 – Position mount on frame and add 5/8" flat washer, lock washer and nut on bolt. Hand tighten only. Both sides.

Step 5 – Some models need 2 forward most holes drilled into frame rails, once this is done, backing plates with 2 holes can be positioned inside over holes by way of using pull wire included. (plate must be pulled from end of frame forward into position) Add 5/8" x 2" bolts through plate and frame by way of bolt pull wire.

Step 6 – Add 5/8" flat washers, lock washers and nuts to 2 bolts each side. Hand tighten only.

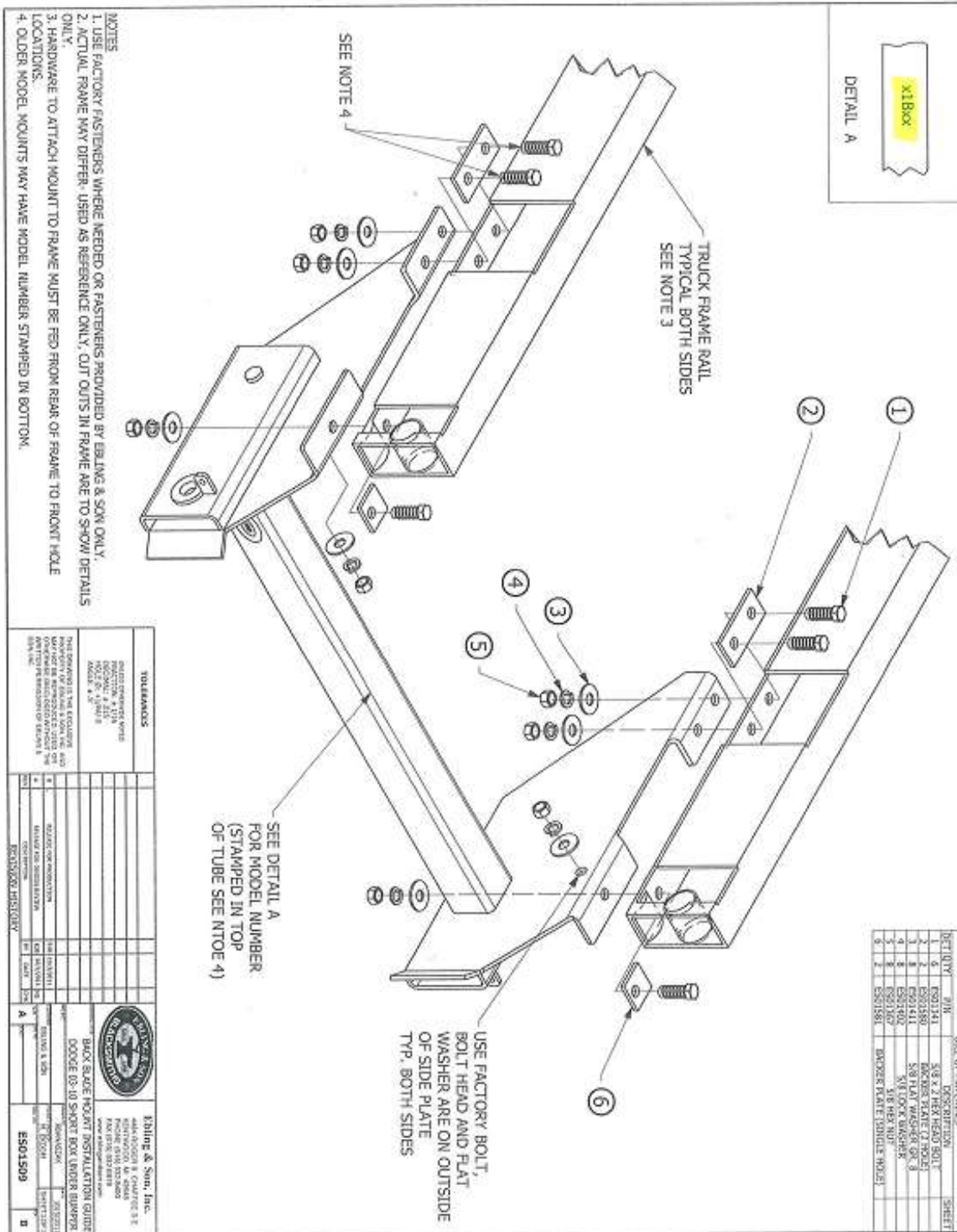
Step 7 – Using bolt, washer and nut removed in step 2, place bolt in hole with head and flat washer to the outside. Hand tighten only.

Step 8 – Tighten 3 bolts on each frame rail first, then tighten side plate bolts. Make sure to retighten nuts and bumper brackets loosened in step 2.

Step 9 – Torque all bolts to specification as shown in torque chart.

* All parts and hardware included for the 1B mount must be used in the installation. Any missing or non-OEM parts or hardware will void warranty.

Installation of mount is complete





TORQUE SPECIFICATIONS

BEFORE DRIVING YOUR VEHICLE, YOU SHOULD CHECK THE TORQUE ON ALL NUTS AND BOLTS IN THE KIT, INCLUDING ANY SLIDER BOLTS ON THE CALIPERS. RE-TORQUE CALIPER BOLTS AFTER 500 MILES. ALL SPECIFICATIONS ARE IN FT-LBS.

BOLT GRADES				
U.S.	SAE 2	SAE 5	SAE 7	SAE 8
Metric	5.8	8.8	9.8	10.9
Steel Type	Low Carbon (soft)	Medium Carbon Heat Treat	Medium Carbon Alloy	Medium Carbon Alloy

SAE	Bolt Grade	2	2	5	5	7	7	8	8	Socket Head Cap Screw	Socket Head Cap Screw
Bolt Dia.	Thread per inch	Dry	Oiled	Dry	Oiled	Dry	Oiled	Dry	Oiled	Dry	Oiled
1/4"	20	4	3	8	6	10	8	12	9	14	11
1/4"	28	6	4	10	7	12	9	14	10	16	13
5/16"	18	9	7	17	13	21	16	25	18	29	23
5/16"	24	12	9	19	14	24	18	29	20	33	26
3/8"	16	16	12	30	23	40	30	45	35	49	39
3/8"	24	22	16	35	25	45	35	50	40	54	44
7/16"	14	24	17	50	35	60	45	70	55	76	61
7/16"	20	34	26	56	40	70	50	80	60	85	68
1/2"	13	36	31	75	55	85	70	110	80	113	90
1/2"	20	52	42	90	65	100	80	120	90	126	100
9/16"	12	52	42	110	80	135	100	150	110	163	130
9/16"	18	71	57	120	90	150	110	170	130	181	144
5/8"	11	98	78	150	110	140	140	220	170	230	184
5/8"	18	115	93	180	130	210	160	240	180	255	204
3/4"	10	157	121	260	200	320	240	380	280	400	320
3/4"	16	160	133	300	220	380	280	420	320	440	350
7/8"	9	210	160	430	320	520	400	600	460	640	510
7/8"	14	230	177	470	360	580	440	660	500	700	560
1"	8	320	240	640	480	800	600	900	680	980	780
1"	12	350	265	710	530	860	666	990	740	1060	845

METRIC	5.8	8.8	9.8	10.9
Bolt Dia.	Oiled	Oiled	Oiled	Oiled
5mm	3.5	5	6	8
6mm	6	9	10.5	12
8mm	15	22	25	32
10mm	29	44	51	62
12mm	51	76	89	111